



# ENSTO

## Ensto Lighting

Export Portfolio 2017

**Better life.**  
With electricity.



Ensto's residential luminaire selection is extremely wide and designed to cover all professional needs in general lighting at home as well as in public premises.

## Homes and public areas



## Garden





Efficient and functional lighting enhances productivity and improves performance where ever we work. Ensto's public premises luminaires can be designed and installed to make the best possible lighting for each situation.

## Suspended and surface mounted



Aino



Aino Ramp



Alpo



Alpo Ramp

## Downlights



Optima



Tivoli



AVD190

## Public premises other



AVD370



AVD550



AVR67



Sport

## Modular luminaires



Diana Flat LED



DPML



Luxova



Lampett

## Wall luminaires



Ensto solves industrial lighting needs. Paper mill or parking hall; our efficient, wide and light technically superior portfolio suits almost everywhere.

## Industrial luminaires



Marlo



Tino



Tino Ramp



Monix Slim



Europroof



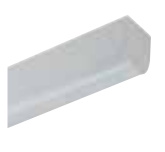
Monix IP23



Monix IP44



Monix Ramp



Letka



IG20



IG44



HB360



Ensto's outdoor luminaire selection is energy efficient, long lasting and economically sustainable. We know how to light parks, squares as well as yards and parking areas.

## Parks



Saga



Camillo



Opera



Opera Deco



Tori

## Facades



AVR8



Forte



AVR51/52



ROV



# Ensto Saga - The Story of Light

Ensto Saga is an outdoor luminaire, in which high quality light technical solution and design meet. Symmetric and asymmetric light distribution enables energy efficient lighting solution according to the specific needs of the project. Due to the innovative reflector solution, modern control technology and luminous efficacy Saga is an excellent choice for various surroundings.

## Finnish Design

Ensto Saga is designed by Ville Kokkonen together with Ensto Lighting product development team. Saga fits perfectly to different types of outdoor areas, giving the final touch with light. Saga is beautiful also in daylight when its figures are visible and highlighted.

Ensto Saga will be made in two different versions 42W and 28W with light output of 4500 lm and 3000 lm.

IP65 protection class and IK10 impact class will guarantee Saga's suitability to all public areas.

Ensto Saga is available for project deliveries in May 2017.



Ensto Saga writes a new story to outdoor lighting. Symmetric and asymmetric light distribution options and truly magnificent design greets people and premises on many locations.

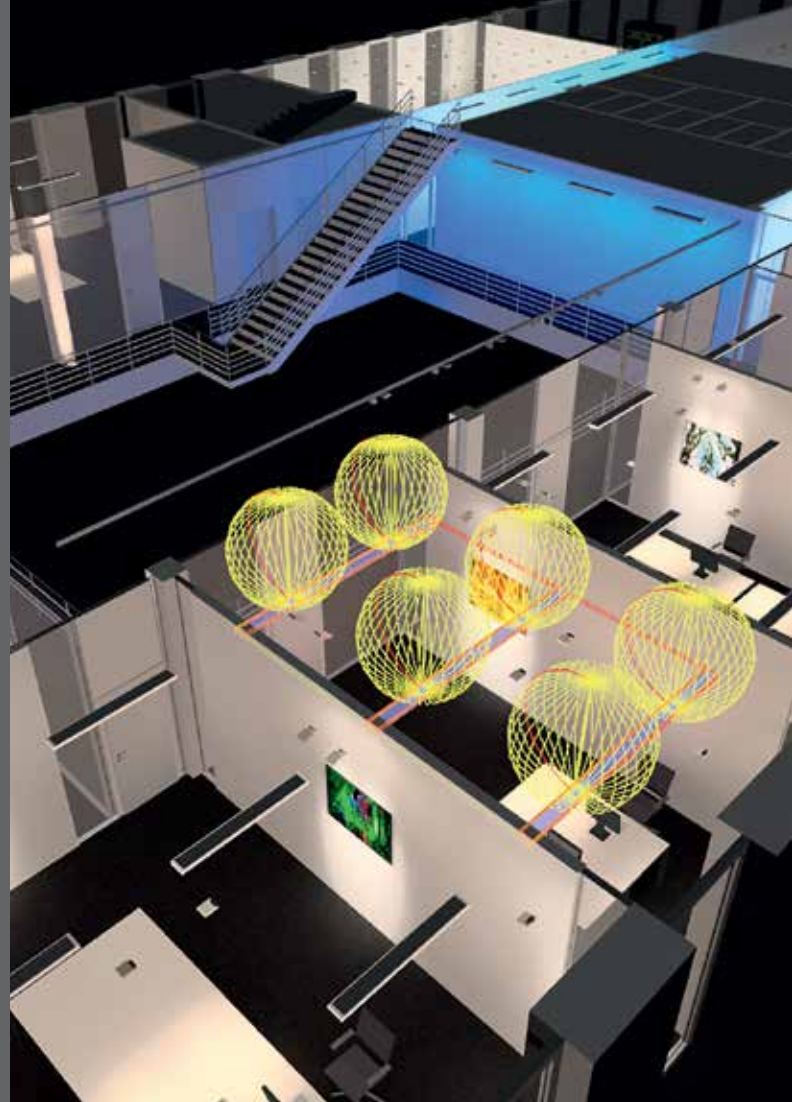
# Dialux

Ensto has made a Premium Partnership agreement with German lighting software company DIAL. Ensto's lighting products can now be found from Plug-In version of DIALux program.

Ensto Plug-In for DIALux can now be downloaded from our website. Plug-In enables fast and efficient product search and light distribution curve download directly into your program. You will find Ensto also directly in the DIALux program where the downloading is easy and fast as well. You may search light distribution curves from product hierarchy or by technical features.

Load Ensto Plug-In for DIALux and benefit from leading Finnish manufacturer's product data.

[www.dialux.com](http://www.dialux.com)



## SmartLighting

Smart Lighting is created with a combination of quality luminaire with optics chosen for the purpose included with a control system doing the magic in the premises.

Quality of a luminaire can be experienced in different ways, but Ensto quality means easy installation, long lifetime and variety of optics and control. Ensto provides exceptional amount of options when adding Smart into lighting.

It all starts from project and premises needs and we are more than happy to help you along the way when making decisions to last for decades. Everything from optics and movement detection to artificial intelligent and learning can be added to the variety of our high running portfolio.



## SmartWay

Ensto SmartWay is a self-learning, wirelessly networked and future proof control system. SmartWay luminaires listen and learn by themselves and from each other to make sure that there is always light on your way. Plug'n play, no programming or commissioning needed.

## Move!

Ensto Luminaires and movement detection is a base for many Smart Solutions but operate perfectly as standalone versions as well. Ensto Move! -luminaires use PIR or Radar technique, depending on your projects and demand.

## SmartDim

Ensto SmartDim is a programmable dimming solution which gives you optimized energy saving and light output when and where it's needed. You can choose maximum of 5-steps and levels during the dark hours.

## SmartOne

Ensto SmartOne is a standalone solution for offices and public premises which does not need any extra wiring. Luminaire operates independently depending on movement, presence or light coming from other sources. Plug'n Play, no programming needed.

## RF

Radio Frequency (RF) enables luminaires to be wirelessly connected to each other. When RF luminaire is detecting movement it will light up the group ahead of it and one behind. RF makes lighting more secure and you'll never enter a dark place.

## Owlet

Owlet is a tailor made solution for IoT in outdoor lighting. Ensto Luminaires with Owlet are connected to cloud based UI which gives you remote access to monitor and control your outdoor fleet of luminaires.

## Dual White

Ensto luminaires with Dual White -solution are equipped with integrated option for light color temperature switching. You can easily switch between 3000 K and 4000 K which saves your SKUs and gives you possibility to change color temperature according to project, with one luminaire.

## Optics

Ensto luminaires include variable possibilities for optical solutions to choose from. Symmetric, wide and many others, our product families have several options for light distribution and -output to fit your project and demand.

## DALI

DALI drivers enable luminaires to be connected to DALI based control systems and Smart Buildings. Compared to a fixed output installation, the dimming and individual control capability provided by DALI enables considerable energy savings and control, depending on luminaire specifications.

## Tunable white

Ensto luminaires with Tunable White -solution are a base for Human Centric lighting. You can integrate Ensto TW -luminaires into numerous control systems which operate steplessly between 2700 K and 6500 K. Tunable White -solution is perfect for modern office use.

## BaseDim

Ensto BaseDim -solution makes energy saving easy without compromising safety or area lighting. BaseDim drops light output 50% during 8 hours in dark time. It's automatic and simple, but gives you benefits in energy saving.

## Dimming

Ensto can provide many dimming possibilities for luminaires. 1-10V, Switch Dim, DALI and base light are just few examples of possibilities to change the light output to fit your premises.

# ENSTO

Ensto Lighting Oy  
Hepolammentie 25  
08680 Lohja  
order.lighting@ensto.com

[ensto.com](http://ensto.com)

