

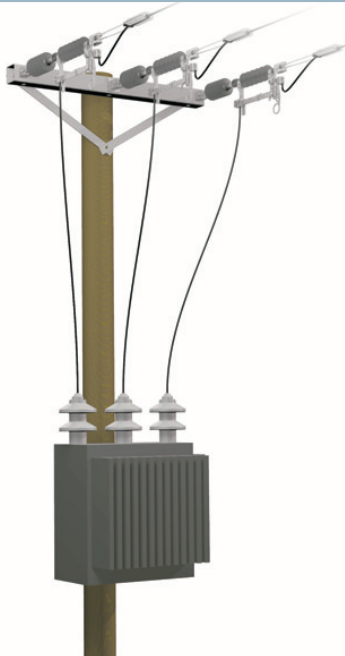
ENSTO

SZ 24 DISCONNECTOR

Ensto Overhead



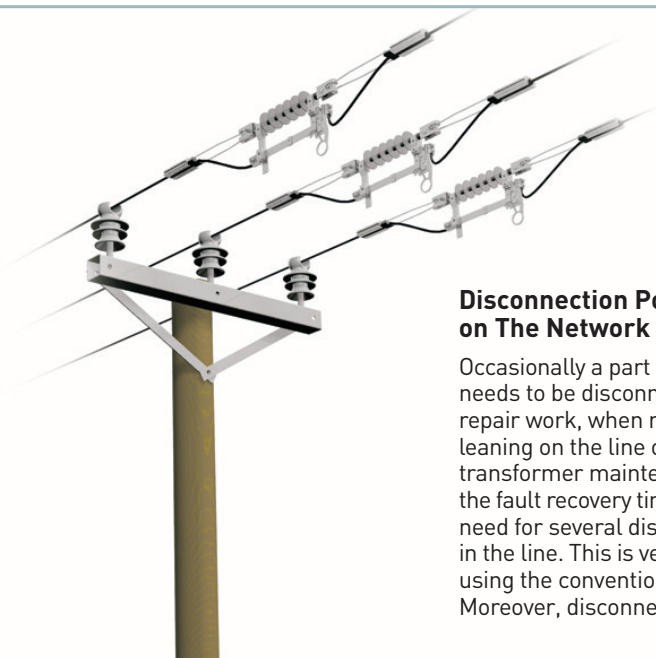
SZ 24 Disconnecter is an ideal Solution for MV overhead lines



Ensto's new SZ 24 disconnecter is an ideal solution for MV overhead lines. SZ 24 is a more economical and practical solution for pole mounted transformer substations, cable terminations, branch lines and sectional poles compared to the traditional disconnectors.

SZ 24 is easy and quick to install even on existing lines as no additional constructions are needed. SZ 24 disconnecter is 1-pole operated by standard live line tools e.g. Ensto's CT48.64. SZ 24 can be used on bare and PAS lines.

SZ 24 is tested and approved according to the newest international standards. Its breaking capacity is 12.5 A, mostly sufficient for rural areas on branch lines.

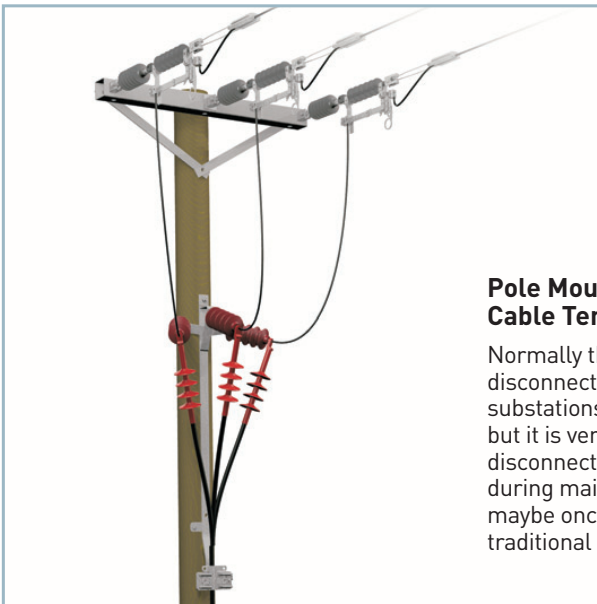


Disconnection Point on The Network

Occasionally a part of the network needs to be disconnected e.g. during repair work, when removing trees leaning on the line or during transformer maintenance. To make the fault recovery time shorter, there is need for several disconnection points in the line. This is very expensive when using the conventional disconnectors. Moreover, disconnection point with a

jumper can be too slow to operate and needs a full live line crew.

With Ensto's new SZ 24 disconnecter, building disconnection point to the network is now cheap and easy even on existing lines. The disconnecter can also be used as a maintenance disconnecter e.g. in remote control substations or line repair work.

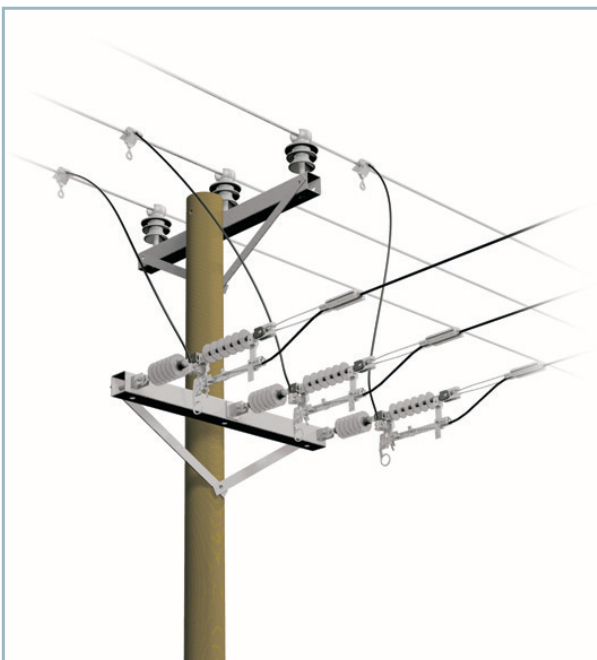


Pole Mounted Substation and Cable Termination

Normally there is need for a disconnector on pole mounted substations or on a cable termination, but it is very seldom operated. The disconnector is typically operated only during maintenance or repair work maybe once in ten years. Therefore a traditional disconnector would be

expensive in these applications.

Ensto's SZ 24 disconnector offers reliable and cheap solutions for transformer and cable termination installations. It can be installed on a span with line insulators or together with tension insulator on tension cross-arms.



Branch Lines

SZ24 disconnector offers an economical solution for branch lines. It is easily installed on tension cross arm with tension insulators and thus every branch line will be economically equipped with disconnection point. This simplifies operation in fault situations and reduces the fault recovery time.

SZ 24 DISCONNECTOR

RATED VALUES

Voltage U_r	24 kV
Insulation levels	
*Power frequency withstand voltage, 1 min, 50 Hz	50 kV, 60 kV
*Lightning withstand voltage	125 kV, 145 kV
Frequency	50 Hz
Normal current I_r	400 A
Short time withstand current I_k	10 kA
Peak withstand current I_p	25 kA
Duration of short circuit t_k	1 s
Mechanical endurance class M0	1000 operating cycles
Mainly active load-breaking current I_1	12.5 A (30 co)
Cable-charging breaking current I_{4a}	10 A (30 closing and opening operations)
Line-charging breaking current I_{4b}	10 A (30 closing and opening operations)
Leakage distance, minimum	628 mm
Ice breaking capacity	10 mm

APPROVED ACCORDING TO IEC 60694, IEC 60265, IEC 62271-102



UTILITY NETWORKS

ENSTO SEKKO OY
P.O.BOX 51
06101 PORVOO, FINLAND
TEL.+358 (0)204 76 21
FAX +358 (0)204 76 2770
UTILITY.NETWORKS@ENSTO.COM
WWW.ENSTO.COM